

HANGIL S V

HANGIL SPECIAL VEHICLE CO., LTD

THE BEST PARTNER OF YOUR DREAM



Greetings

“Hangil SV” is a company specializing in custom build trucks based on industrial plants, heavy construction equipments, automation equipments & hydraulic technologies and in the midst of ever changing work and living environment and rapidly changing logistics environment, we are changing into a human focused environment and sharing the progressive innovation and vision.

Best future oriented technology development and rigorous quality control
Earnest and passionate product manufacturing
Realization of thorough customer care and customer impression

“Hangil SV” pledges to become the company that grows with our partner, the customer, and contributors in regional, national levels and co-prosperity of mankind.

Thank you.

From all of us HANGIL SPEICAL VEHICLE CO., LTD

History

1998	03	Company Establishment
	04	Automobile logistics distribution device developed & produced
2006	05	Compactor truck (5 ton) developed
	09	Sprinkler truck (5 ton) developed
2007	03	Food garbage collection truck developed
	11	SKY LIFT truck developed
	12	Branched off to Hangil SV
2008	05	Stick Boom Crane developed (HGC986M, HGC976M)
	09	Auger device developed
	10	SKT LIFT export launch
2009	01	Telescopic Boom Crane (HGC986-2W) export launch
	02	Multi-purpose SKY LIFT crane developed
2010	06	Big size Stick Boom Crane(HGC9900MH) developed
2011	02	Aerial work platform truck (HG 0) developed and get Safety Certificate
2012	04	Aerial work platform truck (HGS180) developed and get Safety Certificate
		Russian certificate for crane and aerial work platform (GOST_R, GOST-TR, RTN)



TRUCK MOUNTED CRANE



	HGC070	HGC373	HGC374	HGC375	HGC513	HGC514	HGC974	HGC975	HGC976	HGC986	HGC1035	HGC2070
Max lifting Capacity (kg.m)	2,000	7,000	7,000	7,000	11,000	11,000	17,000	17,000	17,000	18,000	30,000	68,000
Max height (m)	5.6	9.2	11.4	13.7	11	13.6	16.2	19.2	22.0(25.0)	23.5(26.5)	24	34.8
Max range (m)	3.8	7.8	10	12.2	8.6	11.2	13	16	18.8	20.3	21	31
Lifting Capacity (kg/m)	2,000 / 1	3,200 / 2	3,200 / 2	3,200 / 2	5,000 / 2.2	5,000 / 2.2	7,250 / 2	7,250 / 2	7,250 / 2	8,000 / 2	10,000/3	19 / 3
	1,000 / 2.5	1,600/5.3	1,150/5.6	1,150/5.6	2,900 / 3.5	2,350 / 4	2,650 / 6	2,650 / 6	2,650 / 6	2,900 / 6	6,000/5.6	5,700 / 12
	750 / 3.8	830/ 7.8	770 / 7.8	770 / 7.8	1,430 / 5	1,450 / 6	1,200 / 11	1,200 / 11	1,200 / 11	1,350 / 11	1,950/13	3,300 / 17
			500 / 10	350 / 12.2	650 / 8.6	520 / 11	900 / 13	600 / 16	380 / 18.8	450 / 20.3	1000/21	1,000 / 31
Undulation Angle (°)	-35~70	-25~78	0~80	0~80	0~80	0~80	0~80 -17~80	0~80 -17~80	0~80 -17~80	0~80 -17~80	0~80 -10~80	-10~80
Rotation Speed (rpm)	1	1	1.9	1.9	1.9	1.9	1.9	1.9	1.9	1.9	1.9	1.5
Rotation Angle (°)	330	Endless 360	Endless 360	Endless 360	Endless 360	Endless 360	Endless 360	Endless 360	Endless 360	Endless 360	Endless 360	Endless 360
Boom	Hexagonal 3-step	Hexagonal 3-step	Hexagonal 4-step	Hexagonal 5-step	Hexagonal 3-step	Hexagonal 4-step	Hexagonal 4-step	Hexagonal 5-step	Hexagonal 6-step	Hexagonal 6-step	Hexagonal 5-step	Hexagonal 6-step
Front Outrigger (Span)	Driver seat 1 step (2.6m)	1 step type (4m)	1 step type (4m)	1 step type (4m)	1 step type (4.3m)	1 step type (4.3m)	1 step type (5.5m)	1 step type (5.5m)	1 step type (5.5m)	1 step type (5.5m)	2 step type (6m)	2 step type (7m)
Rear Outrigger (Span)	Option 'A' type (1.4m)	Option 1 step type (3.8m)	Option 1 step type (3.8m)	Option 1 step type (3.8m)	Option 1 step type (3.8m)	Option 1 step type (3.8m)	Option 1 step type (4.5m)	1 step type (4.5m)	1 step type (4.5m)	1 step type (4.5m)	1 step type (4.5m)	2 step type (5.5m)
Power source	P.T.O	P.T.O	P.T.O	P.T.O	P.T.O	P.T.O	P.T.O	P.T.O	P.T.O	P.T.O	P.T.O	P.T.O
Tank Volume (l)	20	30	100	100	100	100	150	150	150	150	200	250
Rated oil Flow (l/m)	10	15	40	40	40	40	60	60	60	60	80	90/90
Rated oil pressure (kg/cm ²)	200	195	200	200	200	200	210	210	210	210	210	210
Chassis Payload (Ton)	Over 1	Over 3.5	Over 3.5	Over 3.5	Over 5	Over 5	Over 5	Over 5	Over 5	Over 7	Over 11	Over 20

* Product image and specification represented here may be changed without prior notice for product performance enhancement and may differ from the actual product.

TRUCK MOUNTED CRANE



Product image and specification represented here may be changed without prior notice for product performance enhancement and may differ from the actual product.

Main Component & Feature



Winch



Oil tank



Safety valve

TRUCK MOUNTED CRANE

Multi-purpose equipment used mainly for up/down and heavy mass transport in construction and public work sites.



Main Component & Feature

1. Powerful '2' derrick cylinder



2. Strong outrigger and wide span



3. Comfortable Topseat



4. Durable boom structure and elaborate assembly



TRUCK MOUNTED CRANE





TRUCK MOUNTED CRANE



TRUCK MOUNTED CRANE





ELECTRIC TOWER WASH TRUCK



AUGER CRANE

Product Specification

			HGC976A	HGC986A	HGC2070A
Crane	Max lifting Capacity	kg·m	17000	18000	68000
	Max lifting weight	Ton/m	7.5 / 2	7.5 / 2	19/3
	Max working height	m	22.4	23.9	34.8
	Undulation Angle	°	-17~80	-17~80	-10~80
	Rotation Speed	rpm	1.9	1.9	1.5
	Rotation Angle	°	Endless 360	Endless 360	Endless 360
	Boom		Hexagonal 6-step	Hexagonal 6-step	Hexagonal 6-step
Outrigger	Type	Front (m)	1 step 'H' type	2 step 'H' type	2 step 'H' type
		Rear	1 step 'H' type	1 step 'H' type	2 step 'H' type
	Max width	Front	5.5	6	7.3
		Rear	4.5	4.5	6.4
Hydraulic system	Power source		P.T.O	P.T.O	P.T.O
	tank volume	l	150	150	250
	Rated oil flow	l/m	60	60	90/90
	Rated oil pressure	kg/cm ²	210	210	210
Drill	Diameter	mm	380	380	380
	Working depth	m	5	5	5
	Working area	m	6.9	7.4	11.1
	Installation	Position	2 section boom	2 section boom	2 section boom
Chassis	Payload	9 ton	9 ton	25 ton	
Other	1. Safety valve At Boom/Derrick/Outrigger				
	2. Turning reducer with a built-in hydraulic break				
	3. Hook safety latch				
	4. HGC976MH + higher strong structure				
	5. HGC986MH + higher strong structure				
	6. Double oil pump				
Option	1. 500 mm diameter drill				

Above specification is standard of auger. Crane

If you have other required specification of auger, the price and specification can be changed..

Product image and specification represented here may be changed without prior notice for product performance enhancement and may differ from the actual product.

AUGER CRANE



LUFFING TOWER CRANE

Luffing tower crane is useful at the center of city. This performance is very high due to speed control by vector inverter control system. And also using remote control on the ground.



Main Component & Feature



1. CABLE CONTROL UNIT



2. REMOTE CONTROL UNIT



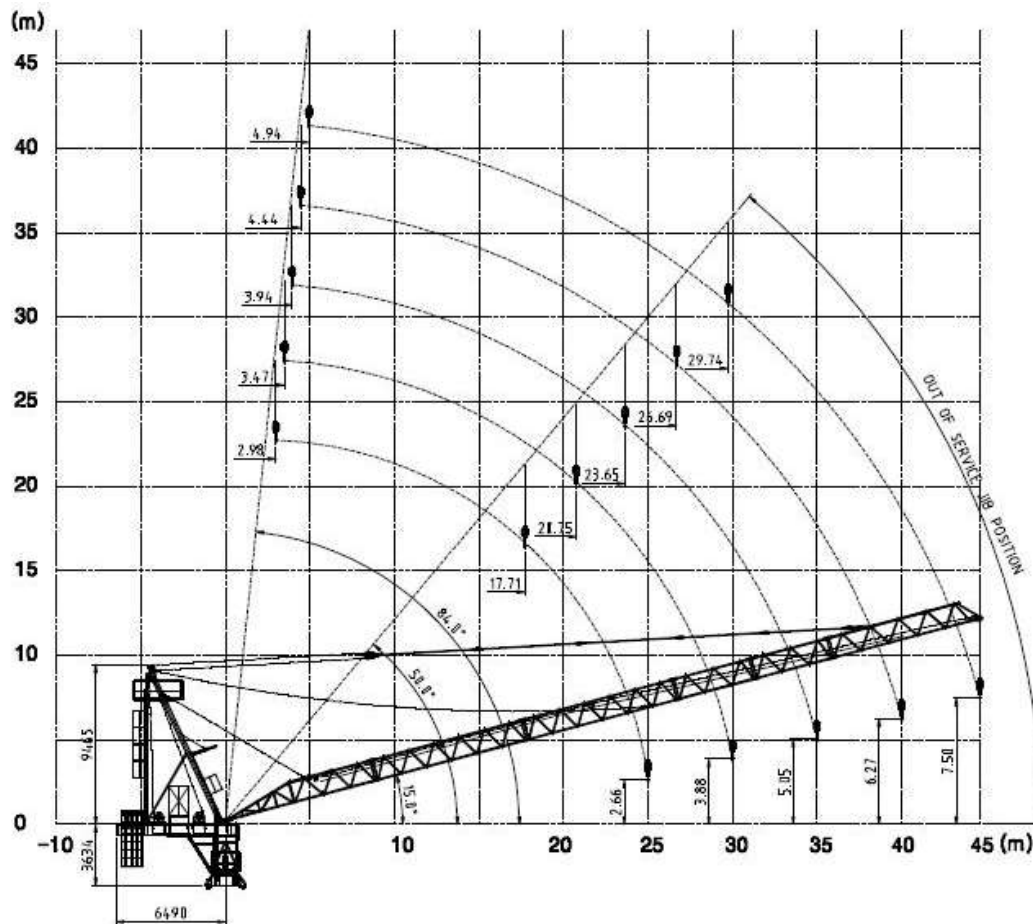
3. WINCH



4. SUPPORT

LUFFING TOWER CRANE


Jib position



Product image and specification represented here may be changed without prior notice for product performance enhancement and may differ from the actual product.

Working radius and capacity

WORKING RADIUS AND CAPACITY

	Jib range[m]		15	20	25	30	35	37	40	45
	MAX. capacity[t]	Falls								
45m 	2.98t/37m		2.98	2.98	2.98	2.98	2.98	2.98	2.70	2.32
40m 	2.98t/37m		2.98	2.98	2.98	2.98	2.98	2.98	2.75	
35m 	2.98t/35m		2.98	2.98	2.98	2.98	2.98			
30m 	2.98t/30m		2.98	2.98	2.98	2.98				
25m 	2.98t/25m		2.98	2.98	2.98					



	HGS100	HGS120	HGS160	HGS180	HGS200	HGS260	HGS280	HGS300	HGS420
Max working height (m)	10	12	16	18	20	26	28	30	42
Max working range (m)	7	9	11	13	15	13	15	20	25
Max working weight (kg)	200	200	300	300	300	300	300	300	300
Undulation angle (°)	-25~78	-25~78	-20~80	-20~80	-20~80	-17~80	-17~80	-18~80	-18~80
Rotation Speed (rpm)	1	1	1	1	1	1.9	1.9	1.5	1.5
Rotation Angle (°)	350	350	350	350	350	350	350	350	350
Boom	3-step	4-step	4-step	5-step	5-step	6-step	6-step	6-step	6-step
Control	Basket and manual control	Basket and manual control	Basket and manual control	Basket and manual control	Basket and manual control	Basket and manual control	Basket and manual control	Remote and manual control	Remote and manual control
Basket Rotation Angle (°)	Option 360	Option 360	Option 360	Option 360	Option 360	Option 360	Option 360	Option 360	Option 360
Front Outrigger (span)	1 step type (3.15m)	1 step type (3.15m)	1 step type (3.9m)	1 step type (3.9m)	1 step type (3.9m)	1 step type (5.5m)	2 step type (6m)	2 step type (6.5m)	2 step type (8m)
Rear Outrigger (span)	Option 'A' type (1.4m)	Option 'A' type (1.4m)	1 step type (3.8m)	1 step type (3.8m)	1 step type (3.8m)	1 step type (4.5m)	1 step type (4.5m)	2 step type (6.5m)	2 step type (8m)
Power Source	P.T.O	P.T.O	P.T.O	P.T.O	P.T.O	P.T.O	P.T.O	P.T.O	P.T.O
Tank Volume (l)	30	30	60	60	60	150	150	150	200
Rated oil Flow (l/m)	15	15	21	21	21	45	45	60	80
Rated oil Pressure (kg/cm ²)	195	195	195	195	195	200	200	200	200
Chassis Payload (Ton)	Over 1					Over 5	Over 5	Over 3.5	Over 5

* Product image and specification represented here may be changed without prior notice for product performance enhancement and may differ from the actual product.



AERIAL WORK PLATFORM

Multi-intended/multi-functional equipment used in transporting construction materials to and from high-rise buildings, undergoing new construction & renovations, facility maintenance, signboard & landscapes, historical property re-construction/maintenance and cinema & event filming.



Product image and specification represented here may be changed without prior notice for product performance enhancement and may differ from the actual product.

Main Component & Feature



Winch
-Compact
-Usefulness



Bucket drop table



Remote controller

AERIAL WORK PLATFORM





AERIAL WORK PLATFORM

Multi-intended/multi-functional equipment used in transporting construction materials to and from high-rise buildings, undergoing new construction & renovations, facility maintenance, signboard & landscapes, historical property re-construction/maintenance and cinema & event filming.



Product image and specification represented here may be changed without prior notice for product performance enhancement and may differ from the actual product.

Main Component & Feature



STRONG BASE FRAME



WIDE SPAN OUTRIGGER



SAFETY EQUIPMENT

AERIAL WORK PLATFORM



AERIAL WORK PLATFORM





AERIAL WORK PLATFORM



AERIAL WORK PLATFORM





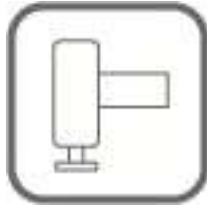
AERIAL WORK PLATFORM



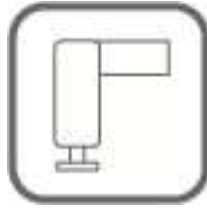
CONFIGURATION



A type outrigger



H type outrigger



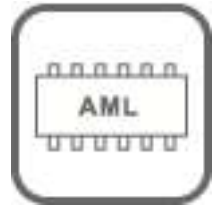
L type outrigger



Middle jack



OLP system



AML system



Swing lock



Overwinding protection



Internal gear type



External gear type



2 Speed winch



Sub winch



Hook latch



Top seat



Emergency stop button



Oil cooler



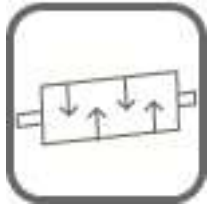
Remote control



Jib boom



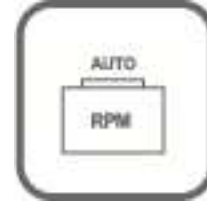
Oil tank



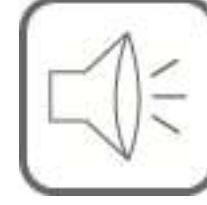
Hyd' safety valve



Search light



Auto Accelerator



Horn



Oil gauge



Air reel



Hydraulic reel



Electricity reel



Standard bucket



Extended bucket



AML system



Bin lift



Manual accerlerator



Light



Foot hold



Hand grip



Tool

CERTIFICATES



ISO 9001:2008



GOST-R



RTN



GOST-TR

www.hangilsv.com

HANGIL SPECIAL VEHICLE CO., LTD

87-23, Hwangtalli-gil, Gangnae-myeon, Heungdeok-gu, Cheongju-si,
Chungcheongbuk-do, Korea

TEL : +82-43-231-5012 / FAX : +82-43-237-5016

E-MAIL: hangilsv@naver.com / www.hangilsv.com

