



ISO 9001:2008
ISO 14001:2004

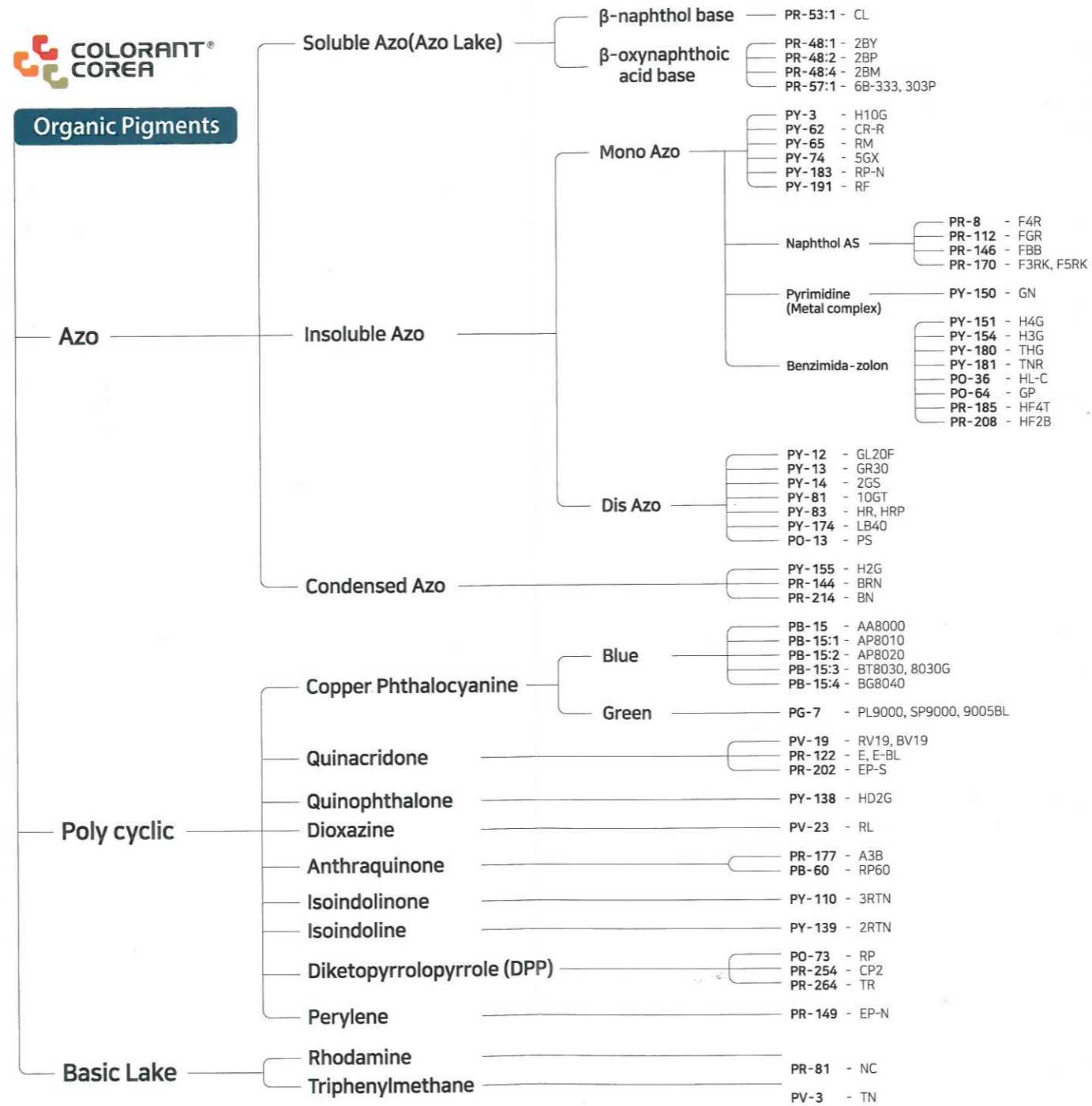
Organic Pigments



CLASSIFICATION OF COLORANT COREA ORGANIC PIGMENTS

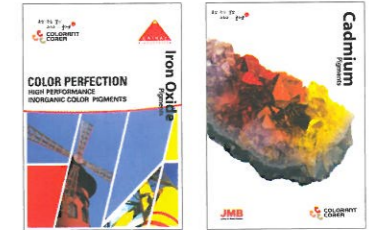


Organic Pigments



ISO 9001:2008
ISO 14001:2004

Organic Pigments



www.cccworld.co.kr

COLORANT COREA CO.,LTD.

26, Amnihabang-gil, Samdong-myeon, Ulju-gun, Ulsan, Korea (Zip 44956) ccctop@naver.com

T +82. 52. 262. 6650~3 F +82. 52. 262. 6654

울산광역시 울주군 삼동면 암리하방길 26

T 052.262.6650~3 F 052.262.6654





Product Name
Pigment Color Index

CCC Orange PS
C.I Pigment Orange 13



CCC Orange HL-C
C.I Pigment Orange 36



CCC Orange GP
C.I Pigment Orange 64



CCC Orange RP
C.I Pigment Orange 73



CCC Red F4R
C.I Pigment Red 8



CCC Red 2BY
C.I Pigment Red 48:1



CCC Red 2BP
C.I Pigment Red 48:2



CCC Red 2BM
C.I Pigment Red 48:4



CCC Lake Red CL
C.I Pigment Red 53:1



CCC Carmine 6B-333
C.I Pigment Red 57:1



CCC Carmine 303P
C.I Pigment Red 57:1

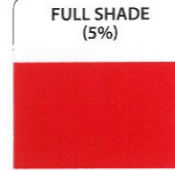


Oil Absorption (gr/100gr)	Specific Gravity (gr/cm ³)	PH	RESISTANCE TO SOLVENT						RESISTANCE TO CHEMICAL							APPLICATION						HEAT RESISTANCE (°C)	LIGHT FASTNESS					
			Water	Ethanol	Xylene	M.E.K	D.O.P	Acid	Alkali	Solvent	PAINTS		INKS		PLASTICS		HEAT RESISTANCE (°C)	LIGHT FASTNESS										
											Industrial	Aqueous	Oil inks	Packaging	Aqueous	PVC			PO	EPL								
45	1.4	6.5	5	3	2	3	3	5	5																	180	5	
55	1.6	6.5	5	4	5	5	5	5	5	●	●	●	●	●	●	○	○										250	8
45	1.5	7.0	5	4	5	5	5	4	5	○	○	○	○	○	○	○	○	○	○	○	○	○	○	○	○		300	7
45	1.3	7.0	4	4	5	3	5	5	5	○	●	○	○	○	○	○	○	○	○	○	○	○	○	○	○		280	7
45	1.5	7.0	5	3	3	2	2	4	4																		150	5
45	1.8	8.0	4	4	5	5	4	3	4	○	○	○	○	○	○	○	○	○	○	○	○	○	○	○	○		220	5
45	1.7	8.0	4	4	4	4	4	3	4																		220	5
40	1.6	7.0	4	3	5	5	4	2	3	●	○	○	○	○	○	○	○	○	○	○	○	○	○	○	○		200	6
45	1.6	7.5	5	3	4	3	4	3	3																		200	4
50	1.7	7.0	4	3	4	4	4	2	3	○	○	○	○	○	○	○	○	○	○	○	○	○	○	○	○		180	4
50	1.7	7.5	4	2	4	4	4	2	3																		200	5



Product Name
Pigment Color Index

CCC Red FGR
C.I Pigment Red 112



CCC Red BRN
C.I Pigment Red 144



CCC Red FBB
C.I Pigment Red 146



CCC Red EP-N
C.I Pigment Red 149



CCC Red F3RK
C.I Pigment Red 170



CCC Red F5RK
C.I Pigment Red 170



CCC Red A3B
C.I Pigment Red 177



CCC Red HF4T
C.I Pigment Red 185



CCC Red HF2B
C.I Pigment Red 208



CCC Red BN
C.I Pigment Red 214



CCC Red CP2
C.I Pigment Red 254



Oil Absorption (gr/100gr)	Specific Gravity (gr/cm ³)	PH	RESISTANCE TO SOLVENT						RESISTANCE TO CHEMICAL							APPLICATION						HEAT RESISTANCE (°C)	LIGHT FASTNESS					
			Water	Ethanol	Xylene	M.E.K	D.O.P	Acid	Alkali	Solvent	PAINTS		INKS		PLASTICS		HEAT RESISTANCE (°C)	LIGHT FASTNESS										
											Industrial	Aqueous	Oil inks	Packaging	Aqueous	PVC			PO	EPL								
55	1.5	7.0	5	3	2	2	3	5	5	○	○	○	○	○	○	○	○	○	○	○	○	○	○	○	○		180	7
40	1.5	7.0	5	5	5	5	5	5	5	○	●	○	○	○	○	○	○	○	○	○	○	○	○	○	○		300	8
45	1.4	7.0	5	4	3	4	4	5	5	○	○	○	○	○	○	○	○	○	○	○	○	○	○	○	○		200	6
60	1.4	7.5	5	5	5	5	5	5	5																		300	8
40	1.4	7.0	5	4	4	4	4	5	5	○	○	○	○	○	○	○	○	○	○	○	○	○	○	○	○		200	7
40	1.4	7.0	5	4	4	4	4	5	5	○	○	○	○	○	○	○	○	○	○	○	○	○	○	○	○		200	7
45	1.5	7.5	5	5	5	5	5	5	5	○	○	○	○	○	○	○	○	○	○	○	○	○	○	○	○		250	7
45	1.5	7.5	5	5	5	5	5	5	5	○	○	○	○	○	○	○	○	○	○	○	○	○	○	○	○		250	7
45	1.4	7.5	5	5	5	5	5	5	5																		250	7
50	1.6	7.5	5	5	5	5	5	5	5	○	○	○	○	○	○	○	○	○	○	○	○	○	○	○	○		300	8
40	1.6	7.0	5	5	5	5	5	5	5	○	○	○	○	○	○	○	○	○	○	○	○	○	○	○	○		300	8



Product Name
Pigment Color Index

CCC Rubine TR
C.I Pigment Red 264

CCC Pink NC
C.I Pigment Red 81

CCC Pink E
C.I Pigment Red 122

CCC Pink E-BL
C.I Pigment Red 122

CCC Margenta EP-S
C.I Pigment Red 202

CCC Red RV19
C.I Pigment Violet 19

CCC Violet BV19
C.I Pigment Violet 19

CCC Violet TN
C.I Pigment Violet 3

CCC Violet RL
C.I Pigment Violet 23

CCC Blue AA8000
C.I Pigment Blue 15

CCC Blue AP8010
C.I Pigment Blue 15:1



Oil Absorption (gr/100gr)	Specific Gravity (gr/cm ³)	PH	RESISTANCE TO SOLVENT					RESISTANCE TO CHEMICAL		APPLICATION							HEAT RESISTANCE (°C)	LIGHT FASTNESS			
			Water	Ethanol	Xylene	M.E.K	D.O.P	Acid	Alkali	Solvent	Industrial Aqueous	Oilinks	Packaging Aqueous	PVC	PO	EPL					
55	1.4	7.5	5	4	5	4	5	5	5	●	●	●	○	●	○	●	○	●	○	300	8
45	1.7	6.0	5	4	3	3	4	3				●	○	○						150	5
45	1.5	7.5	5	5	5	5	5	5	5	●	●	○	●	●	●	●	○	●	○	300	8
45	1.5	7.5	5	5	5	5	5	5	5	●	●	○	●	●	●	●	○	●	○	300	8
50	1.9	7.0	5	5	5	5	5	5	5	●	●	○	○	○	●	●	○	●	○	300	8
45	1.5	7.0	5	5	5	5	5	5	5	●	●	○	●	●	●	●	○	●	○	300	7
45	1.5	7.0	5	5	5	5	5	5	5	●	●	○	●	●	●	●	○	●	○	300	7
45	1.7	6.0	4	3	3	3	5	4				●	○	○						160	6
45	1.6	6.5	5	5	5	5	5	5	5	●	●	○	○	○	●	●				280	7
42	1.7	7.0	5	5	4	5	5	5			●	○	●	○	○					200	7
45	1.7	7.0	5	5	4	5	5	5			○		○	●	●					300	8



Product Name
Pigment Color Index

CCC Blue AP8020
C.I Pigment Blue 15:2

CCC Blue BT8030
C.I Pigment Blue 15:3

CCC Blue 8030G
C.I Pigment Blue 15:3

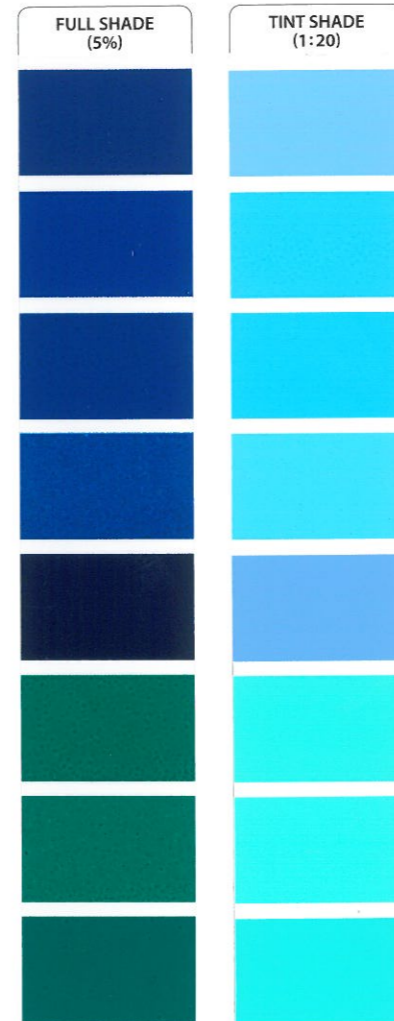
CCC Blue BG8040
C.I Pigment Blue 15:4

CCC Blue RP60
C.I Pigment Blue 60

CCC Green PL9000
C.I Pigment Green 7

CCC Green SP9000
C.I Pigment Green 7

CCC Green 9005BL
C.I Pigment Green 7



Oil Absorption (gr/100gr)	Specific Gravity (gr/cm ³)	PH	RESISTANCE TO SOLVENT					RESISTANCE TO CHEMICAL		APPLICATION							HEAT RESISTANCE (°C)	LIGHT FASTNESS			
			Water	Ethanol	Xylene	M.E.K	D.O.P	Acid	Alkali	Solvent	Industrial Aqueous	Oilinks	Packaging Aqueous	PVC	PO	EPL					
45	1.7	7.0	5	5	5	5	5	5	5	○	○					●	●	●		300	8
42	1.6	7.0	5	5	5	5	5	5	5	●	●	●	●	●	●	●	●	●	●	280	7
40	1.6	7.0	5	5	5	5	5	5	5	●	●	●	●	●	●	●	●	●	●	280	8
40	1.6	7.0	5	5	5	5	5	5	5	●	●	●	●	●	●	●	○	●	○	280	8
40	1.5	7.0	5	5	5	5	5	5	5	○	●	○				○	●	○		280	8
32	2.0	7.5	5	5	5	5	5	5	5	○	○	○	○	○	○	○	○	○	○	300	8
30	2.1	7.5	5	5	5	5	5	5	5	●	●	●	●	●	●	●	○	○		300	8
30	2.1	7.5	5	5	5	5	5	5	5	●	●	●	●	●	●	●	○	○		300	8

Colorant Corea Pigments & Dispersions