



Excavator, Breaker Hydraulic Seal Kit & Parts

Hydraulic Portal Sealing System

취급제품

- Poly Urethane Wheel & Vulkollan Product
- Hydraulic Packing & Seal
- Excavator Parts & Breaker Parts
- Rubber & Plastic Products
- Industrial parts & Car parts

YBS의 장점

Hydraulic Portal Sealing System

- 중장비 및 각종 산업용 유압피스톤과 실린더에서 누유를 방지하는 패킹과 씰은 충격에 강하고 내마모성과 내구성에 우수한 YBS브랜드 제품의 강점입니다.
- 고객의 요구에 맞는 연구개발과정을 거쳐 정밀하고 고품질의 제품을 만드는 것이 최선의 목표입니다.

폴리우레탄의 놀라운 특성!

- 일반우레탄의 특성을 넘어, 독일 Bayer사의 Vulkollan 원료를 사용함으로써 진동과 충격에 강한 Wheel & Solid type 제품과 Sponge type 제품으로 다양한 산업에서 안전한 제품과 고기능성 제품으로 활용됩니다.
- 모든 제품은 주문제작하며 3차원정밀측정과 가공기술, 기술연구소와 품질관리의 섬세한 품질측정을 통하여 제작 되어집니다.

Company History

1994. 07

- 유창하이텍 설립

1995. 01

- 독일 Bayer사와 Vulkollan(PU) 원료 및 기술공급계약

1997. 09

- Fiets사와 테프론 씰의 판매와 독점 공급계약 체결

1998. 01

- 고온고압용 Breaker seal 개발(건설장비용)

1998. 05

- Excavator Breaker repair Seal Kit 수출
(베트남, 사우디 아라비아, 이집트, 사우디아라비아, 터키 등의 중앙아시아 지역)

2000. 10

- 일본 SUMITOMO 중공업(주) 굴삭기용 A/S Cylinder용 seal kit 공급
- 순정부품 등록(BS Packing Co.,LTD.)및 납품개시

2007. 03

- SINGAPORE KOBELCO 순정부품공급계약체결

2007. 08

- 경기도 화성시 독정리 제1공장 준공

2010. 01

- KOBELCO C,K,C,M,G 순정부품 공급계약 체결

2010. 02

- 서울본사 이전, 물류센터 개설

2011. 03

- 기술개발연구소 설립(KOITA : No 11110664)

2012. 02

- 제2공장 증축(경기도 화성시)

2012. 11

- Breaker Diaphragm & Damper 신제품개발

1994. 07

- Established YOOCHANG HI-TECH Co.,Ltd.

1995. 01

- Contract with Bayer Germany as on exclusive supplier of Vulkollan(P/U) raw materials and technology.

1997. 09

- Contract with Fietz Co. in Germany for exclusive supply and sales of Teflon Seal in Korea

1998. 01

- Developed Breaker Seal for High-Temperature and High-Pressure (for construction machinery)

1998. 05

- Launched export Excavator Breaker repair Seal Kit (Vietnam, Saudi Arabia, Egypt, Saudi Arabia, Turkey and Central Asia Region)

2000. 10

- Registered supplier of parts for seal kits for A/S cylinder in excavators of SUMITOMO Heavy Industry Co.,Ltd in Japan, and started supplying. (BS Packing co.,Ltd.)

2007. 03

- Contract with KOBELCO CO. in Singapore for supply of Genuine Seal parts.

2007. 08

- Completed construction of 1st factory in Dokjeong-ri, Hwaseong-si.

2010. 01

- Contract with KOBELCO C,K,C,M,G for supply of Genuine Seal parts.

2010. 02

- The headquarters in Seoul relocated, Logistics Management Dept opened

2011. 03

- Established R&D Center(KOITA : No 11110664)

2012. 02

- Completed construction of 2nd factory in Dokjeong-ri, Hwaseong-si.

2012. 11

- Developed New Breaker Diaphragm & Damper.



HYDRAULIC SEAL & PACKING



EXCAVATOR SEAL PARTS

Introduce Structure of Cylinder Sealing System



BACK UP RING

- Name : B.U.Ring for Rod Seal
- Type : **BRN**, **BRT**
- Function :
To increase the pressure-resistance, the material should have pressure resistance and impact resistance.
- Material & Color - **BRN** (Nylon-Mos2) Gray Color
- **BRT** (PTFE-Bz30%) Khaki Color

DUST SEAL

- Name : Dust Seal
 - Type : **DKB1**-Nabuco Type
DKBH-KYB Type
DKB-Komatsu
 - Function :
Prevent foreign matters gets inside of the Cylinder.
 - Material&Color-
DKB1 (EGI + PU) Ivory Color
DKBH (EGI + PU) Ivory Color, **DKB**(EGI + NBR) Black Color
- There is 2mm hole on the DKBH, in the event of occurring high pressure between Rod seal and Dust seal, the holes has extracting back pressure features for protecting the Rod Seal.



BUFFER SEAL

- Name : Buffer Seal
- Type : **HBV**, **YBT**-Nabuco Type, **HBV**, **SRH45B**-KYB type
- Function :
When suddenly operates the cylinder, the sudden pressure changing gives high pressure to the Rod Seal, and it occurs reducing lifetime and oil leakage. To absorb the impulse pressure from rapid pressure changing, set the Buffer Seal in front of the Rod Seal.
- Material & Color - **HBV**(PU+Nylon)-Ivory or Blue Color,
SRH45B (PTFE+Rubber+Nylon)
- **HBV** (PU) - Ivory or Orange Color
- **SRH45B** (PTFE + Rubber + Nylon)
- Khaki+Black+Green Color



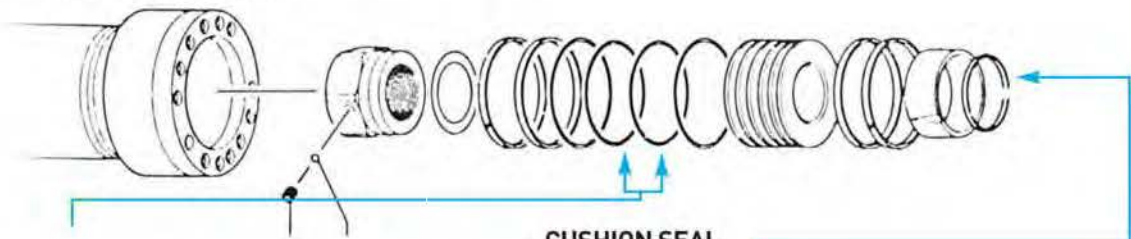
ROD SEAL

- Name : Rod Seal
- Type : **ISI**, **IDI**, **IUH**
- Function :
Main Seal of the Rod Cylinder, it should resist 250-500Bar pressure. Need a material that has durability, oil resistance, high and low temperature resistance.
- Material & Color - **ISI**, **IDI** (PU) - Ivory, Orange Color
IUH (H-NBR, NBR) - Black Color



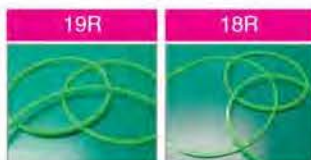
WHY YBS Products are the BEST?

Packing & Seal Products YBS own nearly 20 years of accumulated technology development and supply Genuine Parts exported to more than 20 foreign countries and in the global heavy equipment maker.



BACK UP RING

- NAME : B.U.RING for KYB PISTON SEAL
- Type : **19R**, **18R**
- Function - KYB Main seal is PTFE+Ring, can resist pressure 200-300Bar, but PTFE material cannot resist 300-500Bar.
To prevent pushing problem and increase pressure resistance, install the B.U.Ring on both sides of the PTFE.
- Material & Color - Nylon (Green Color)



CUSHION SEAL

- Name : Cushion Seal
- Type : **31N**, **31P**
- Function - When operate the excavator rapidly, the Piston reaches both ends, and it cause the large impact with noise and vibration. It would damage the Cylinder and machine. To prevent the damage, set Cushion seal on the Arm, Boom Cylinder to reduce the speed and impact. Raw material should have high impact resistance.
- Material & Color - **31N** (Nylon) Black Color
- **31P** (Phenol-CN20) Gray Color



EXCAVATOR SEAL PARTS

Introduce Structure of Cylinder Sealing System

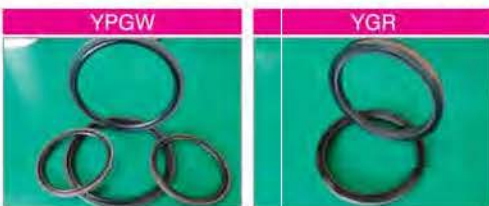


WEAR RING

- NAME : WEAR RING
- TYPE : **Wear Ring**
- Function : To prevent abrasion, static. The raw material must have excellent durability, impact resistance and heat resistance.
- Material & Color – Phenol(Carbon3%) Gray Color

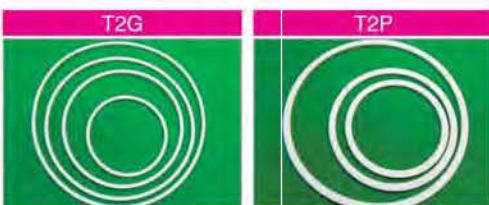
PISTON SEAL

- NAME : PISTON SEAL
- Type : **YGR-KYB Type, YPGW-Nabuco Type**
- Function : Main Seal of the Piston in the Cylinder, control leakage inside the cylinder during operation, it must withstand a pressure of 250-500Bar ; the raw material should have high durability and thermal resistance.
- Material & Color :
YPGW – PTFE(Khaki color) + Rubber(Black Color) + Nylon (Black color)
YGR – PTFE(Khaki color) + Rubber(Black Color)



BACK UP RING

- Name : B.U.Ring for O-Ring
- Type : **T2P, T2G, T4G, T4P**
- Function : Set with the O-ring together, it prevents pushing problem by the pressure.
- Material&Color – **PTFE** (White color)



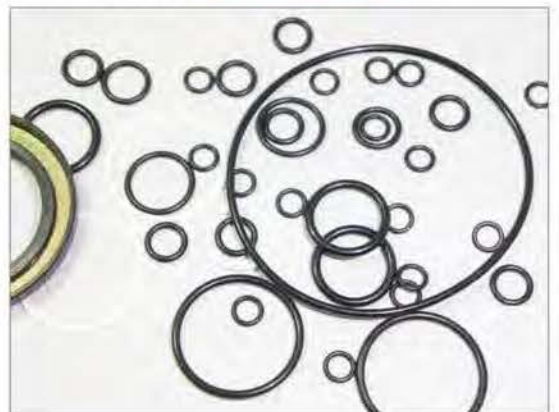
SLYD RING

- NAME : SLYD RING or Contami Seal
- Type : **Slyd Ring, Dust Ring**
- Function : During the cylinder using for a long time, foreign matter gets in between the Piston and Cylinder Tube, it makes the scratches in the cylinder tube and reducing lifetime, it cause oil inner-leakage problem. To prevent this, use Slyd Ring as a Filter. Need a material that has a good impregnation of debris and resistance against the high working pressure.
- Material & Color :
Slyd Ring PTFE(Bz30%) Khaki Color
Dust Ring PTFE (Graphite 20%) White color



O-RING

- NAME : O-RING
- Type : **G Type, P Type, AS568**
- Function : Set on the fatening portino of the Rod Cover, Piston and Rod, itt prevents oil leakage inside of the Cylinder.
- Material & Color : **NBR, FKM(Black Color)**



HYD. REPAIR SEAL KIT



OPTIONAL SELECTION WITH QUALITY GRADE

The quality grade of main seals in the **YBS** seal kit can be optionally provided.
To be realized the quality-grade of seal kit, each final package has small label;



SPECIAL QUALITY - EXCAVATOR SEAL KIT

MATERIAL CODE : YUT20
HARDNESS : H&A95
COLOR : **ORANGE**
BUFFER SEAL : HBY (43)



MATERIAL CODE : YUT20
HARDNESS : H&A95
COLOR : **ORANGE**
ROD SEAL : ISI, IDI, IUIS



MATERIAL CODE : YUT20
HARDNESS : H&A95
COLOR : **ORANGE**
DUST SEAL : DKB1(26), DKBH (26)



[Features of SPECIAL Quality]

- Improved Heat-Resistance
From -20°C (-68°F)
up to 120°C (248°F)
- Upgraded Raw Material
YUT-20 is higher tier of
heat-resistance & tensile
strength
- Structural-Design (IUIS)
The ideal groove-design
applied for smooth oil flow
- Longer Life Time & Durability
The formula of YUT20 achieved
excellent performance at
intensive operating
environments

SPECIAL QUALITY - HYD. BREAKER SEAL KIT

MATERIAL CODE : YUT20
HARDNESS : H&A95
COLOR : **BLUE**
BUFFER SEAL : HBY (43)



MATERIAL CODE : YUT20
HARDNESS : H&A95
COLOR : **BLUE**
ROD SEAL : ISI, IDI, IUIS



MATERIAL CODE : YUT20
HARDNESS : H&A95
COLOR : **BLUE**
DUST SEAL : DSI, LBI, LPI



STANDARD QUALITY - EXCAVATOR & BREAKER

MATERIAL CODE : YUT10
HARDNESS : H&A94
COLOR : **IVORY**
BUFFER SEAL : HBY (43)



MATERIAL CODE : YUT10
HARDNESS : H&A94
COLOR : **IVORY**
ROD SEAL : ISI, IDI, IUIS



MATERIAL CODE : YUT10
HARDNESS : H&A94
COLOR : **IVORY**
DUST SEAL : DKB1(26), DKBH (26)



BREAKER SEAL PARTS

Breaker Seal Kit



Diaphragm



Seal for hydraulic breaker result to vibration and noise, dust, heat resistance, abrasion resistance, which must be satisfied at the same time is difficult. Despite these extremem conditions and the same time that the product satisfies the quality and cost YBS only available to fit.

Hydraulic Breaker Sealing System of YBS has a long experience and know-how, has excellent heat resistance, abrasion resistance, excellent tensile strength, by supplying high quality products and always on the Customer's needs immediately and actively developing products

Available parts of Breaker

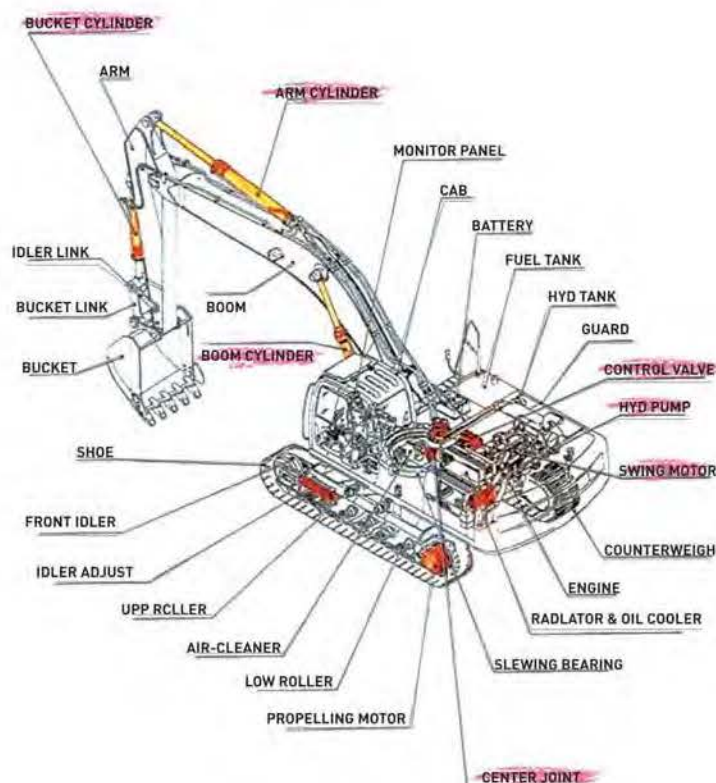
MAKER	MODEL
FRD (FURUKAWA)	FXJ175, FXJ275, FXJ375, FXJ475 / FX-15, FX-25, FX-35, FX-45, FX-55 NEW
	HB1G, HB2G, HB3G, HB5G, HB8G, HB10G, HB15G, HB18G, HB20G, HB30G, HB40G, HB50G, HB200 HB400, HB700, HB1200, HB1500, HB1600 F1, F2, F3, F4, F5, F6, F9, F12, F19, F20, F22, F27, F30, F35, F40, F45
KENT	KF1, KF2, KF3, KF4, KF5, KF6, KF9, KF12, KF19, KF20, FK22, FK27, KF35, KF45 KHB1G, KHB2G, KHB3G, KHB5G, KHB8G, KHB10G, KHB15G, KHB20G, KHB30G, KHB40G, KHB50G
NPK	H-06X, H-08X, H-1X, H-2X, H-3X, H-4X, H-6X, H-7X, H-8X, H-8XA, H-9X, H-10X, H-10XB, H-10XE, H-12X, H-12XE, H-16X, H-18X, H-20X, E210B, E212, E213, E218
SOOSAN	SB10, SB20, SB30, SB40, SB43, SB45, SB50, SB60, SB70, SB80, SB81, SB100, SB120, SB121, SB140, SB150
MONTABERT	BRH125, BRP140, BRH501, BRV32, BRV43, DXB170
EVERDIGM (HANWOO)	EHB008, EHB01, EHB02, EHB03P, EHB04/04H, EHB05, EHB06, EHB10, EHB13, EHB17, EHB20 EHB25, EHB30, EHB31, EHB32, EHB36, EHB40, EHB45, EHB50, EHB70, RHB301, RHB303, RHB304, RHB305, RHB308, RHB309, RHB313, RHB314, RHB320, RHB322, RHB325, RHB328, RHB330, RHB332, RHB333, RHB335, RHB340
DAEMO	DMB50, DMB70, DMB90, DMB140, DMB180, DMB210, DMB230, DMB250, DMB300, DMB360, DMB450, S50, S70, S150, S500, S1300, S1800, S2200, S3600, S4500 B50, B70, B90, B140, B180, B210, B230, B250, B300, B360, B450, B600, B800
MSB	MS200, MS250, MS300, MS400, MS450, MS500, MS520, MS550, MS600, MS700, MS800, MS810, MS900, MS910, SAGA20H, SAGA30H, SAGA40H, SAGA50H, SAGA80H, SAGA100H, SAGA120H, SAGA180H, SAGA200H, SAGA270H, SAGA300H, SAGA330H, SAGA350H, SAGA400H, SAGA500H, SAGA510H
KRUPP	HM600, HM701, HM702, HM711, HM712, HM715, HM719, HM780, HM800, HM901, HM902, HM950 HM960, HM1000, HM1200, HM1300, HM1500
RAMMER	S23, S25, S26, S56, S82, S83, S86, S88, G80, DNB60, DNB70, DNB90, DNB110, DNB160
ATLAS COPCO	MB1200, MB1500, MB1600, MB1700, MB2200
OKADA	OUB303, OUB305, OUB308, OUB310, OUB312, OUB324, TOP60, TOP90, TOP200, TOP205, UB8A, UB11A
TOKU	TNB2E, TNB4E, TNB4M, TNB5M, TNB7E, TNB14E, TNB15E, TNB150LU, TNB151LU
MKB	MKB1400, MKB1400N, MKB1500V, MKB2000
DNA	S80, S150, S300, S700, S800, S1300, S1800, S2200, S2300, S2500, S4500, S5500
KWANGLIM	SG350, SG400, SG600, SG800, SG1200, SG1800, SG2100, SG2500, SG2800, SG3300, SG3400, SG5000
GB(GENERAL BREAKER)	GB1T, GB2T, GB3T, GB4T, GB5T, GB6T, GB7T, GB8T, GB11T, GB14T, GB170, GB200, GB220, GB300, GB500, GB580, GB630

* OTHER AVAILABLE HYD. BREAKER BRANDS

TOYO, FINE, KOMAC, DONGYANG, DAESIN, DAEWON, AJCE, BHI, TORPEDO TNA, JISUNG DONGNAM, JAB

Hydraulic Sealing System Parts for Excavator

MAKER	MODEL
HYUNDAI	R110, R140, R160, R180, R210, R220, R235, R250, R260, R290, R305, R320, R330, R360, R370, R380, R430, R450, R500, R520, R1300LC, R1400LC, R1600LC, R1700LC, R2900LC, R3200LC, R3600LC, R4500LC, HL730, HL740, HL747, HL757, HL760, HL770, HL780
VOLVO(SAMSUNG)	MX3LC, MX6W, MX8W, SE210, SE280, SE350, SE450 EC50C, EC60C, EW60C, EW145B, EC140B/C/D, EC170B/C/D, EC210B/C/D EC240B/C/D, EC290B/C/D, EC360B/C/D, EC480D, EC460B/C/D, EC700B/C
DOOSAN(DAEWOO)	S130W, S130E-3/5, S170W-3, S200W-3, S220-3/5, S300-5, S330-3, S360-5, S370-5, S400-5, S420-5, S450-5, S470-5, S500-5, S700-5, DX55WA, DX140WA, DX210WA, DX140A, DX220LCA, DX300LCA, DX350LCA, DX360LCA, DX380LCA, DX420LCA, DX480LCA, DX500LCA, DX700LCA
CAT/MITSUBISHI	MS030, MS035, MS055, MS062, MS070, MS110, MS120, MS180, MS230, MS280, MS580 E70B, E120B, E200B, E240B, E300B, E450B, REGA311, REGA350, REGA375 CAT307, CAT312, CAT315, CAT320, CAT322, CAT325, CAT329, CAT416
KOMATSU	PC60, PC70, PC100, PC120, PC130, PC150, PC200, PC220, PC240, PC280, PC300, PC310, PC350, PC400, PC450, PC800, PC1200
HITACHI	UH02, UH025, US031, UH04, UH045, UH07, UH081, UH083, UH09, UH10, UH121, UH122, UH12(14), UH16 EX60, EX100, EX120, EX130, EX150, EX200, EX220, EX270, EX300, EX400, EX700, EX1000, EX1800 ZX110, ZX160, ZX180, ZX200, ZX230, ZX250, ZX260, ZX330, ZX450, ZX650
KOBELCO	K903, K904, K905, K907, K909, K914, K916, SK014, SK027, SK032, SK03N2, SK04N2, SK07N2, SK09N2, SK12N2, SK16N2, SK50, SK60, SK75, SK100, SK120, SK135, SK150, SK200, SK210, SK250, SK260, SK300, SK310, SK330, SK400, SK450, SK850
SUMITOMO	S120, S140, S160, S35BJ, S40BJ, LS280, S260, S265, S280, S340, S400, SH60, SH65, SH75, SH100, SH120, SH135U, SH135, SH200, SH220, SH300, SH350HD, SH450HD
KATO	HS400SEV, HD450SEV, HD550SE, HD700SEV, HD770SEV, HD800SEV, HD850SEV, HD900SEV, HD1100, HD1200G, HD1220SEV, HD1800



REMOTE CONTROL VALVE



New YBS R.C.V (Remote Control Valve)

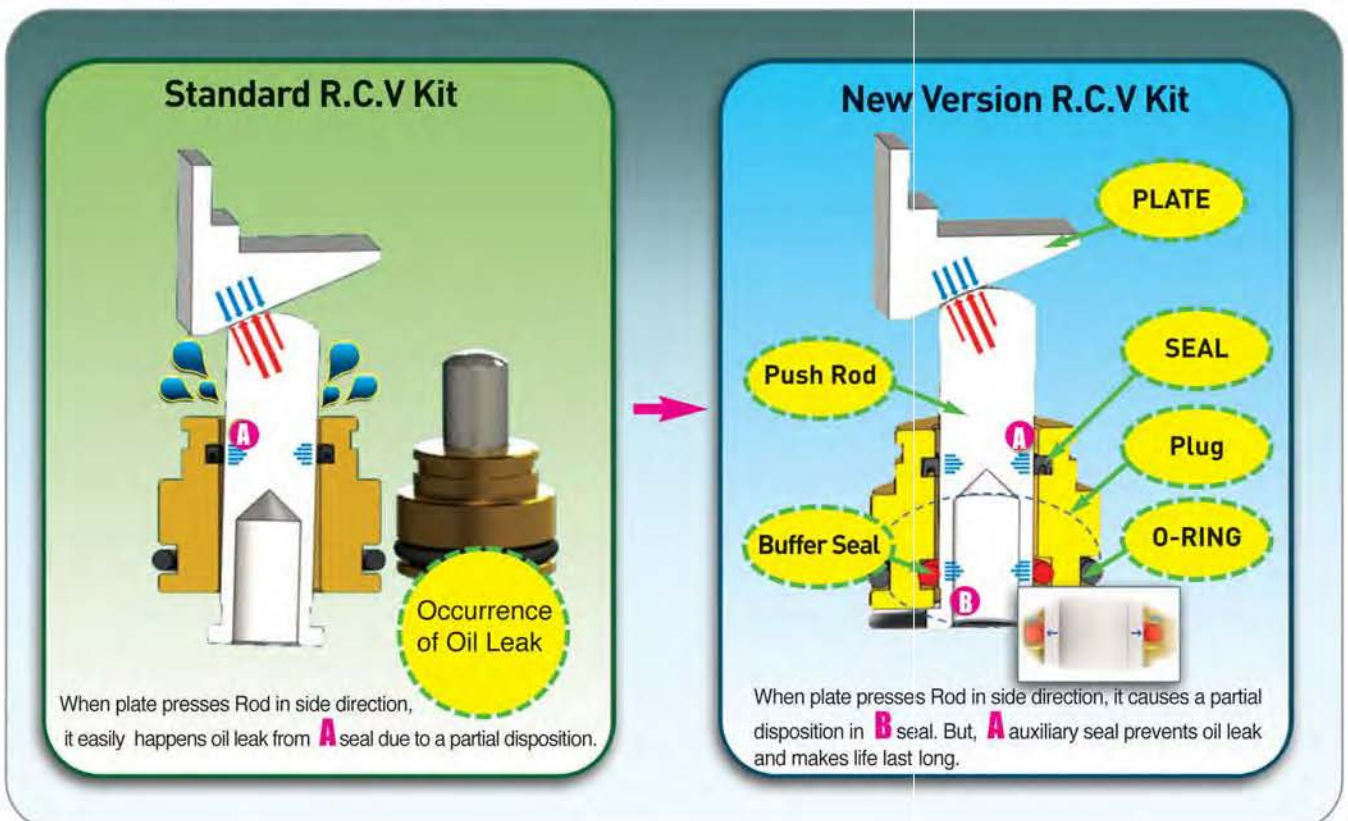


Application Brand :

HITACHI, KOMATSU, KOBELCO, CATAPILLAR, KATO, DOOSAN, HYUNDAI, VOLVO

Opening the Sales for New Remote Control Valve Push & Rod Kit

YBS developed New Remote Control Push & Rod kit and greatly Improved quality of product and start to supply new RCV & Rod kit



HEAVY EQUIPMENT SPARE PARTS



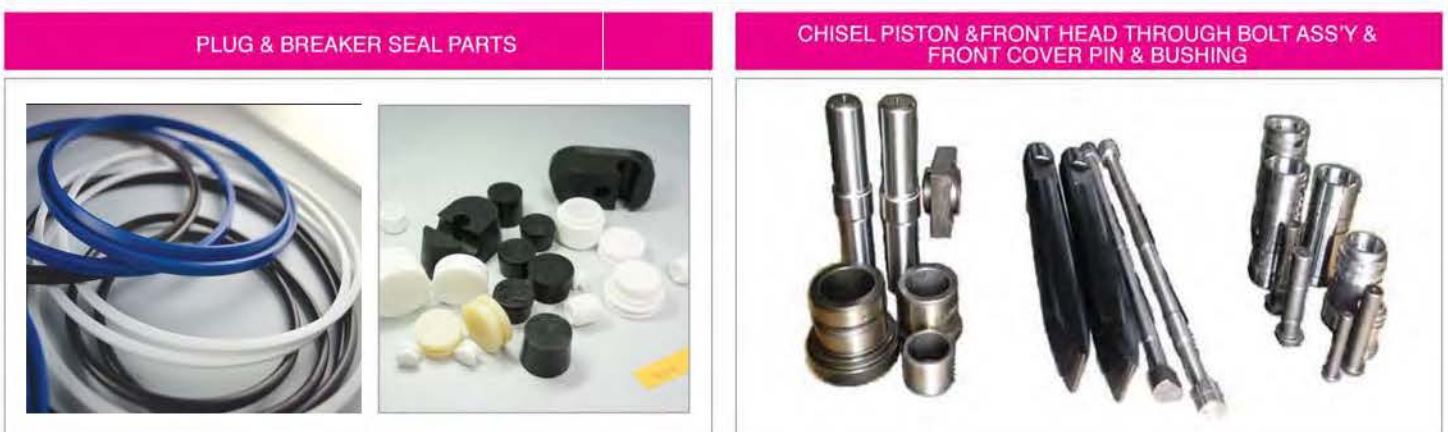
INDUSTRIAL SEAL PARTS



KOREAN EXCAVATOR SPARE PARTS



BREAKER PARTS

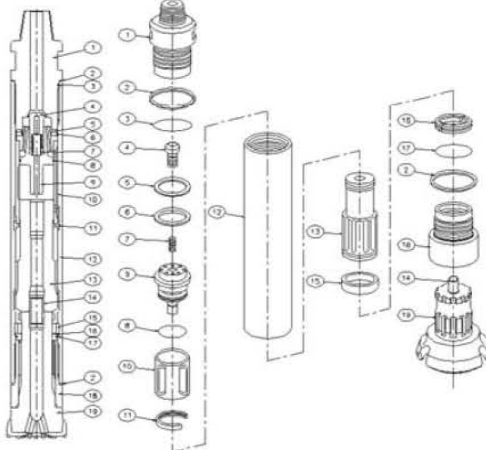



Rock Drilling Tools For Quarrying & Mining

1) Top Hammer Drilling Tools

BUTTON BIT	EXTENSION ROD	SHANK ADAPTER	COUPLING SLEEVE
			
AVAILABLE THREAD DESIGN : R32/R8/T38/T45/T51/ST58/GT60			
DIA. : FROM 45MM TO 127MM	DIA. : FROM 32MM TO 52MM	DETAILS ARE ON THE BACK PAGE	SLEEVE TYPE : R32-R32, R38-R38, T38-T38, T45-T45, T51-T51
SHAPE: SPHERICAL/BALLISTIC/ CONICAL	SHAPE : HEXAGON/ROUND		
SKIRT : NORMAL/RETRAC	THREAD CONNECTION : MALE-MALE (M/M), MALE-FEMALE (M/F)		CROSS-OVER TYPE : R32-R32, R38-R38, T38-T38, T45-T45, T51-T51
FACE : FLAT FACE/DROP CENTER			

2) DTH Drilling Tools

DTH Hammer	DTH Bits																																																																																				
<p>DOWN THE HOLE HAMMER Y180D BIT SHANK : DHD380 (INGERSOLL-RAND)</p> 	<p>DOWN THE HOLE HAMMER Y180D BIT SHANK : DHD380 (INGERSOLL-RAND)</p> <table border="1"> <thead> <tr> <th>No.</th> <th>DESCRIPTION</th> <th>PART NUMBER</th> <th>QTY (PER UNIT)</th> </tr> </thead> <tbody> <tr> <td></td> <td>HAMMER ASSY</td> <td>11045-00</td> <td></td> </tr> <tr> <td>1</td> <td>TOP SUB</td> <td>11045-01</td> <td>1</td> </tr> <tr> <td>2</td> <td>WASHER</td> <td>11034-02</td> <td>2</td> </tr> <tr> <td>3</td> <td>O-RING</td> <td>P379</td> <td>1</td> </tr> <tr> <td>4</td> <td>CHECK VALVE</td> <td>11034-04</td> <td>1</td> </tr> <tr> <td>5</td> <td>SPACER</td> <td>11045-05</td> <td>1</td> </tr> <tr> <td>6</td> <td>MAKE UP RING</td> <td>11045-06</td> <td>1</td> </tr> <tr> <td>7</td> <td>COIL SPRING</td> <td>11034-07</td> <td>1</td> </tr> <tr> <td>8</td> <td>O-RING</td> <td>P346</td> <td>1</td> </tr> <tr> <td>9</td> <td>RIGID VALVE</td> <td>11045-09-01</td> <td>1</td> </tr> <tr> <td>10</td> <td>INNER SLEEVE</td> <td>11045-10</td> <td>1</td> </tr> <tr> <td>11</td> <td>STOP RING</td> <td>11034-11</td> <td>1</td> </tr> <tr> <td>12</td> <td>CASE</td> <td>11045-12</td> <td>1</td> </tr> <tr> <td>13</td> <td>PISTON</td> <td>11045-13-01</td> <td>1</td> </tr> <tr> <td>14</td> <td>FOOT VALVE</td> <td>11045-14-01</td> <td>1</td> </tr> <tr> <td>15</td> <td>PISTON RETAINER RING</td> <td>11034-15</td> <td>1</td> </tr> <tr> <td>16</td> <td>BIT RETAINER RING</td> <td>11034-16</td> <td>1</td> </tr> <tr> <td>17</td> <td>O-RING</td> <td>G359</td> <td>1</td> </tr> <tr> <td>18</td> <td>DRIVE SUB</td> <td>11034-18</td> <td>1</td> </tr> <tr> <td>19</td> <td>BUTTON BIT</td> <td>DHD380</td> <td>N/A</td> </tr> </tbody> </table> 	No.	DESCRIPTION	PART NUMBER	QTY (PER UNIT)		HAMMER ASSY	11045-00		1	TOP SUB	11045-01	1	2	WASHER	11034-02	2	3	O-RING	P379	1	4	CHECK VALVE	11034-04	1	5	SPACER	11045-05	1	6	MAKE UP RING	11045-06	1	7	COIL SPRING	11034-07	1	8	O-RING	P346	1	9	RIGID VALVE	11045-09-01	1	10	INNER SLEEVE	11045-10	1	11	STOP RING	11034-11	1	12	CASE	11045-12	1	13	PISTON	11045-13-01	1	14	FOOT VALVE	11045-14-01	1	15	PISTON RETAINER RING	11034-15	1	16	BIT RETAINER RING	11034-16	1	17	O-RING	G359	1	18	DRIVE SUB	11034-18	1	19	BUTTON BIT	DHD380	N/A
No.	DESCRIPTION	PART NUMBER	QTY (PER UNIT)																																																																																		
	HAMMER ASSY	11045-00																																																																																			
1	TOP SUB	11045-01	1																																																																																		
2	WASHER	11034-02	2																																																																																		
3	O-RING	P379	1																																																																																		
4	CHECK VALVE	11034-04	1																																																																																		
5	SPACER	11045-05	1																																																																																		
6	MAKE UP RING	11045-06	1																																																																																		
7	COIL SPRING	11034-07	1																																																																																		
8	O-RING	P346	1																																																																																		
9	RIGID VALVE	11045-09-01	1																																																																																		
10	INNER SLEEVE	11045-10	1																																																																																		
11	STOP RING	11034-11	1																																																																																		
12	CASE	11045-12	1																																																																																		
13	PISTON	11045-13-01	1																																																																																		
14	FOOT VALVE	11045-14-01	1																																																																																		
15	PISTON RETAINER RING	11034-15	1																																																																																		
16	BIT RETAINER RING	11034-16	1																																																																																		
17	O-RING	G359	1																																																																																		
18	DRIVE SUB	11034-18	1																																																																																		
19	BUTTON BIT	DHD380	N/A																																																																																		

SHANK : DHD340A, SD4, MACH44, DHD350R, SD5, DHD360, SD6, SD8, DHD380, SD10, SD12, N120, DHD112, SD15, N180, SD18, QL200, N240

Rock Drilling Tools For Quarrying & Mining

1) Available Shank Adapter

MAKER	MODEL
FURUKAWA	PD200/M120/HD200, PD200R, HD50, HD90, HD150, HD200, HD300, HD500, HD500(8SP), HD606, HD609 (RP), HD612 (RP), HD615 (RP), HD709 (RP), HD712 (RP), HD715 (RP)
ATLAS COPCO	BBC120, BBE57, COP131 (LS), COP1032, COP1038/1238, COP1132, COP1440/1550/1838/2238, COP1550/1838EX, COP1840/1850, COP1850EX
SANDVIK (TAMROCK)	HL300, L400/550, HLR438/538, HL500/510, HL500S/510S, HL550S/560S, HLX5 (T), HL600, HL650/700/800, HL850 (S), HL1000 (PE), HL1500 (PE)
INGERSOLLRAND	PD200/M120/HD200, PD200R, HD50, HD90, HD150, HD200, HD300, HD500, HD500(8SP), HD606, HD609 (RP), HD612 (RP), HD615 (RP), HD709 (RP), HD712 (RP), HD715 (RP)
MONTABERT	HC40/50, HC80 (RP)/90/105, HC120 (RP)/150 (RP), HC200
EVERDIGM	ED100, ED150
SOOSAN	SP3, SP3G, SP3SF, SP6, TD45, TD51
JUNJIN CSM	JET7, JET8, JET9, JET11, JET15
GARDNER DENVER	PR123/133/55, HPR1H/2H
DNS	DNT3
JOY	VCR260/360
SECOMA	HYDRASTAR 200/300
SIG	HBM100, HBM150
KOMATSU	KDH100 (8SP)

2) Drifter Spare Parts



WE PROVIDE THE DRIFTER SPARE PARTS (PNEUMATIC & HYDRAULIC) UPON YOUR REQUEST

WHAT is the YBS Vulkollan Polyurethane ?

YBS Products are manufacturers of parts in cast polyurethane elastomers under the brand name Vulkollan. Vulkollan polyurethane elastomers offer the following amazing properties:

- Much more resistant to wear than mild and stainless steel
- Greater impact resistant than engineering plastics such as Nylon and Polyurethane
- Superior resistance to compression set, wear, load and most other mechanical forces than rubber
- Impervious to petrol and mineral oils
- Much cheaper tooling than for rubber and plastic mouldings

CONTACT



+82 2 2631 5277



www.ybsworld.com



+82 2 2631 5279



sales@ybsworld.com



RIVER TOWER 2F, BEODENARU-RO 50,
YEONGDEUNGPO-GU, SEOUL, KOREA(REPUBLIC)



80-43, SUJEONG-RO, JANGAN-MYEON, HWASEONG-SI,
GYEONGGI-DO, KOREA(REPUBLIC)



(주)유창하이텍
YOOCHANG HI-TECH CO.,LTD